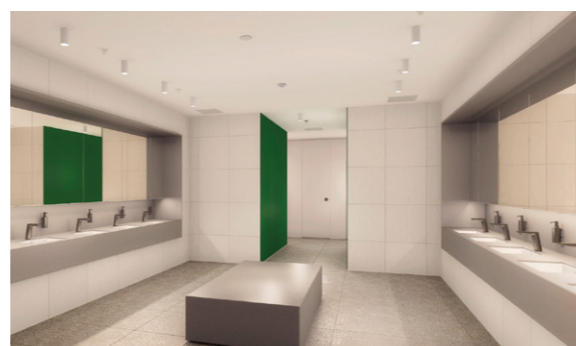


Intercon[Ⓢ]

Sahara Mall Clinics

Location: Sharjah, United Arab Emirates**Year:** 2019**Status:** Completed**Program:** Public Space

The Clinic is located in the Sahara Mall as part of the West zone. The concept for the Clinic follows the proposed theme applied for the mall but focused on those special spaces, the Oasis, that we find in the desert. The design draws its inspiration from the spirit of the oasis, colours, textures, shadows, light, to create a relaxed and warm atmosphere to welcome the customer. Palm tree leaves give us the patterns for the walls, clean lines emphasize the volumes as well as linear lighting, which treats illumination with a contemporary approach.



Public toilet



Main Reception



The lobby reception is paneled with wooden sheets that continues up to the ceiling to form a box. Each panel is emphasized with hidden linear lighting, which adds to the verticality and linearity of the panels, while giving a visual rhythm. The floor is adorned with special patterned grey marble tiles and green granite tiles resembling the reflection of palm leaves. The walls are emphasized with tinted green mirror adding contrast to the space. The lift lobby on the other hand is differentiated with wood veneer paneling. The space is intended to create the ambiance of an oasis through colors and reflections.

Public Areas are designed to provide a calm and warm atmosphere to welcome the customer by using a combination of continuous surfaces with clean lines for the walls and flooring, soft and warm colors and ambient light. Ceramic tiles flooring terrazzo, nude tones for wall tiles, and fixed furniture are proposed to achieve the sand effect of a desert. Accent walls in texturized wood or green color emphasizes the contrast between oasis/desert. The corridors have pockets configured into waiting areas with benches. The entrances and the pockets of waiting areas are highlighted with light, different colors, textured ceramic tile, doors with accent details and the ceiling in green color to give to the entrances more importance, creating, at the same time, different rhythms inside the corridors and breaking the length space.

Clinic

